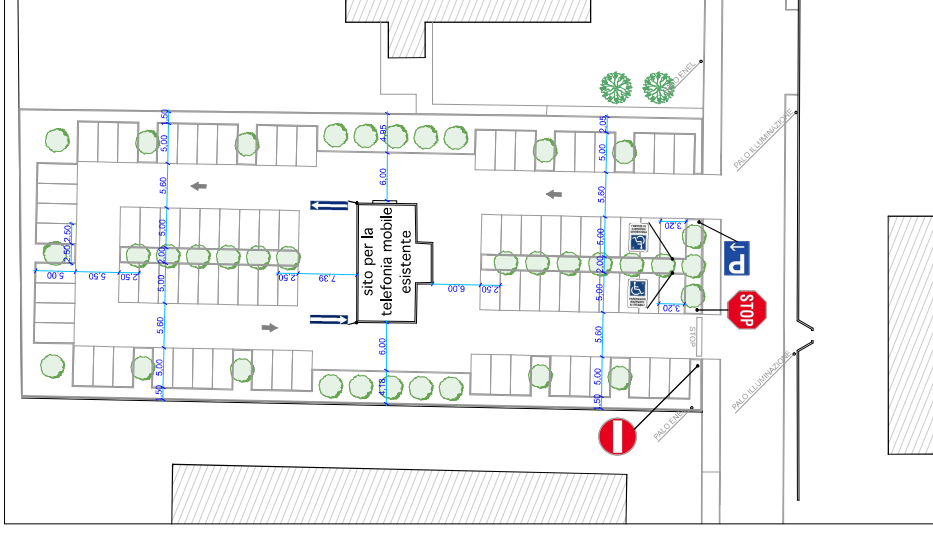
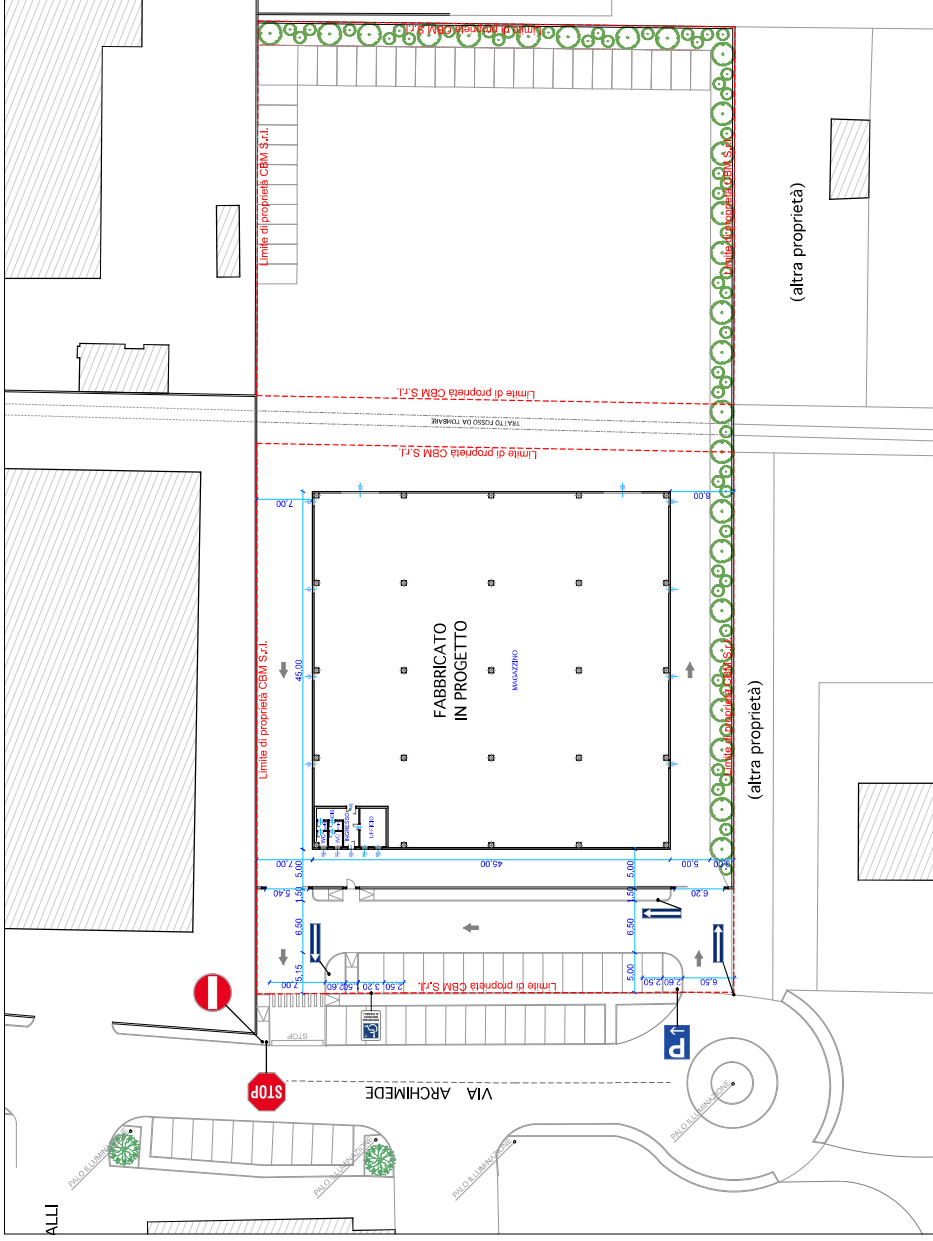





		PROGETTO: ART. 53 L.R. 24/2017 - PROCEDIMENTO UNICO PER NUOVA COSTRUZIONE DI FABBRICATO INDUSTRIALE AD USO MAGAZZINO	
PROGETTO: ARCH. SARA COUCCIELLO		PROPRIETA': CBM S.r.l.	
PROGETTO: GOTTI ING. LORIS		COMMITENTE: CHINAR S.p.a.	
ELABORATO: VARIANTE E SEGNALETICA		TAVOLA: 11	
DATA: LUGLIO 2023	SCALA: 1:250	AGGIORNAMENTO:	
PROGETTA: _____		COMMITENTE: _____	
PROGETTISTA: _____		_____	



LEGENDA TAVOLA - SEGNALETICA

-  Segnaletica verticale "AREA PARCHEGGIO PUBBLICO"
-  Segnaletica verticale "PARCHEGGIO RISERVATO AI DISABILI"
-  Segnaletica verticale "STOP"
-  Segnaletica verticale "DIVIETO"
-  Segnaletica verticale "SENSO UNICO"

